

Dear Students and Parents,

I am assigning a learning preference evaluation that I would like each of the students to complete and bring back to me next week. I have attached for you two learning inventories; one is printed on the next page and one is an online link for which I would like you to record your results on the following page. These evaluations will ask the students several questions about themselves that will reveal the way that they learn best in the classroom. This is not something that is graded, but I would like for them to try their best at answering the questions as truthfully as they can. There are no wrong answers on these tests, so please **do your best!**

These results will help me know how I should be teaching information to the class and how I can best assist each of you in your learning throughout the year. It will also help me in knowing which learning styles we need to work on in the classroom as a whole. Knowing your learning style as a student will help you understand why you take in information and solve problems the way that you do. This knowledge will also help you know what your strengths are when learning in the classroom and what style of learning you and I can try to become better at this year.

The first inventory is on the 8 multiple intelligences. This survey comes with instructions at the top and is very easy to fill out. After completing this one, I would like you to look at the attached handout regarding what each of the intelligences means. This will help you more fully understand your test results. Parents, this can also be a guide for you in knowing more about your child and his/her possible interests and abilities as a student.

The second inventory can be found by typing in the following link on the internet.

<http://www.berghuis.co.nz/abiator/lsi/lstest1.html>

This test contains 30 questions to be answered ‘seldom, sometimes, or often.’ This test will reveal if you are an auditory, visual, or tactile-kinesthetic learner. If you are an auditory learner, you learn best by hearing. If you are a visual learner, you learn best by seeing. If you are a tactile-kinesthetic learner, you learn best by doing. All of these learning preferences are equally important. The thing is that most students prefer one over the other two and it is important for you and I to know which way you learn best! At the end of this evaluation is a link for each kind of learner with *great* learning strategies to keep in mind! I would like you to record your learning style at the bottom of this page and write down three learning strategies from the links that you think would help you become an even better learner this year!

Thank you in advance!  
Ms. Wanner

Name: \_\_\_\_\_

I am a/an \_\_\_\_\_ learner.

Optional: I also scored high in \_\_\_\_\_.

What 3 learning strategies could you use to boost your learning?

1.

2.

3.

# Getting To Know You Survey

## Directions:

Fold the paper on the dark vertical line so that the eight columns on the right are folded back. Then read each statement below. Rate each statement from 0 to 5 according to how well the description fits you (0 = Not at All to 5 = Very True) Next unfold the paper and transfer each number over to the outlined block on the same row. Finally, add the numbers in each column to find the total score for each multiple intelligence area. The highest possible score in one area is 15. How many ways are you smart?

## Which of the following are true about you? 0-5

		Naturalist	Mathematical-Logical	Verbal-Linguistic	Musical-Rhythmic	Visual-Spatial	Bodily-Kinesthetic	Interpersonal	Intrapersonal
I enjoy singing and I sing well.									
I love crossword puzzles and other word games.									
I like spending time by myself.									
Charts, maps, and graphic organizers help me learn.									
I learn best when I can talk over a new idea.									
I enjoy art, photography, or doing craft projects.									
I often listen to music in my free time.									
I get along well with different types of people.									
I often think about my goals and dreams for the future.									
I enjoy studying about the earth and nature.									
I enjoy caring for pets and other animals.									
I love projects that involve acting or moving.									
Written assignments are usually easy for me.									
I can learn new math ideas easily.									
I play a musical instrument (or would like to).									
I am good at physical activities like sports or dancing.									
I like to play games involving numbers and logic.									
My best way to learn is by doing hands-on activities.									
I love painting, drawing, or designing on the computer.									
I often help others without being asked.									
I enjoy being outside in all types of weather.									
I love the challenge of solving a difficult math problem.									
Having quiet time to think over ideas is important to me.									
I read for pleasure every day.									
<b>Totals →</b>									

Nature Math Word Music Art Body People Self



**Bodily-Kinesthetic Intelligence** includes students who learn best by doing. These students retain information the best when it is associated with an activity, such as dance, acting, and sports. This intelligence involves the ability to use movement for either self-expression or accuracy to achieve a goal.

**Intrapersonal Intelligence** is being connected to who you are and how you feel, and knowing your own limits and abilities. This is involved in making decisions and setting goals for yourself, self-management, and self-reflection.

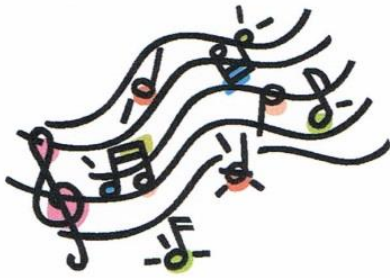


**Interpersonal Intelligence** is about social interaction and understanding the people around you and their intentions, emotions, and perspectives. This is important in managing relationships, understanding situations, and solving conflict.

**Logical-Mathematical Intelligence** is about understanding complex problems and forming relationships between symbols, processes, and actions. This type of student asks questions, finds solutions, and reflects on the problem-



solving process.



**Musical Intelligence** is associated with enjoying music, singing, making music, and playing an instrument. It usually involves some sort of sensitivity to sounds, as well as the emotions music sends forth.

**Naturalistic Intelligence** is about understanding the patterns of living things, and applying scientific reasoning to the world.



**Verbal-Linguistic Intelligence** involves the ability to use words effectively for reading, writing, listening, and speaking.

**Visual-Spatial Intelligence** allows a student to see and modify things in his/her mind. This kind of understanding of the visual world and its relation to physical items helps in solving spatial problems, designing, and doing crafts.

